



**PRÉFET
D'EURE-
ET-LOIR**

*Liberté
Égalité
Fraternité*

Plan de Prévention des Risques naturels prévisibles de Mouvements de Terrain

Commune de Châteaudun

ATLAS CARTOGRAPHIQUE

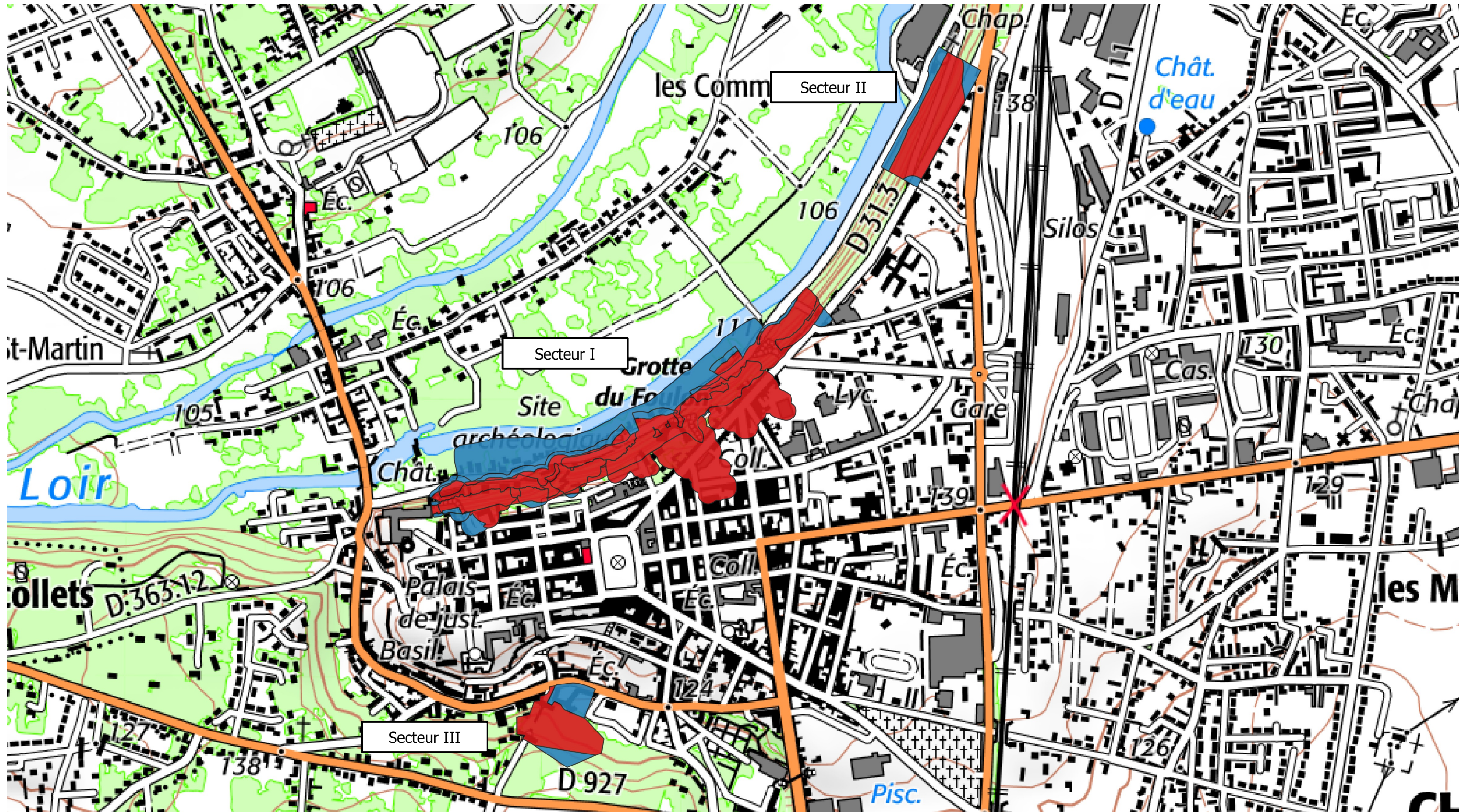
Françoise BOULIMAN

Le Préfet d'Eure-et-Loir





Direction Départementale des Territoires
Service de la Gestion des Risques, de l'Eau et de la Biodiversité
Horaires d'ouverture : 9h00-12h00 / 14h00-17h00 et vend 9h-12h /14h00-16h00
Tél. : 02 37 20 40 60 – fax : 02 37 36 37 03
17, place de la république - CS 40517
28 008 Chartres cedex
<http://www.eure-et-loir.gouv.fr/>

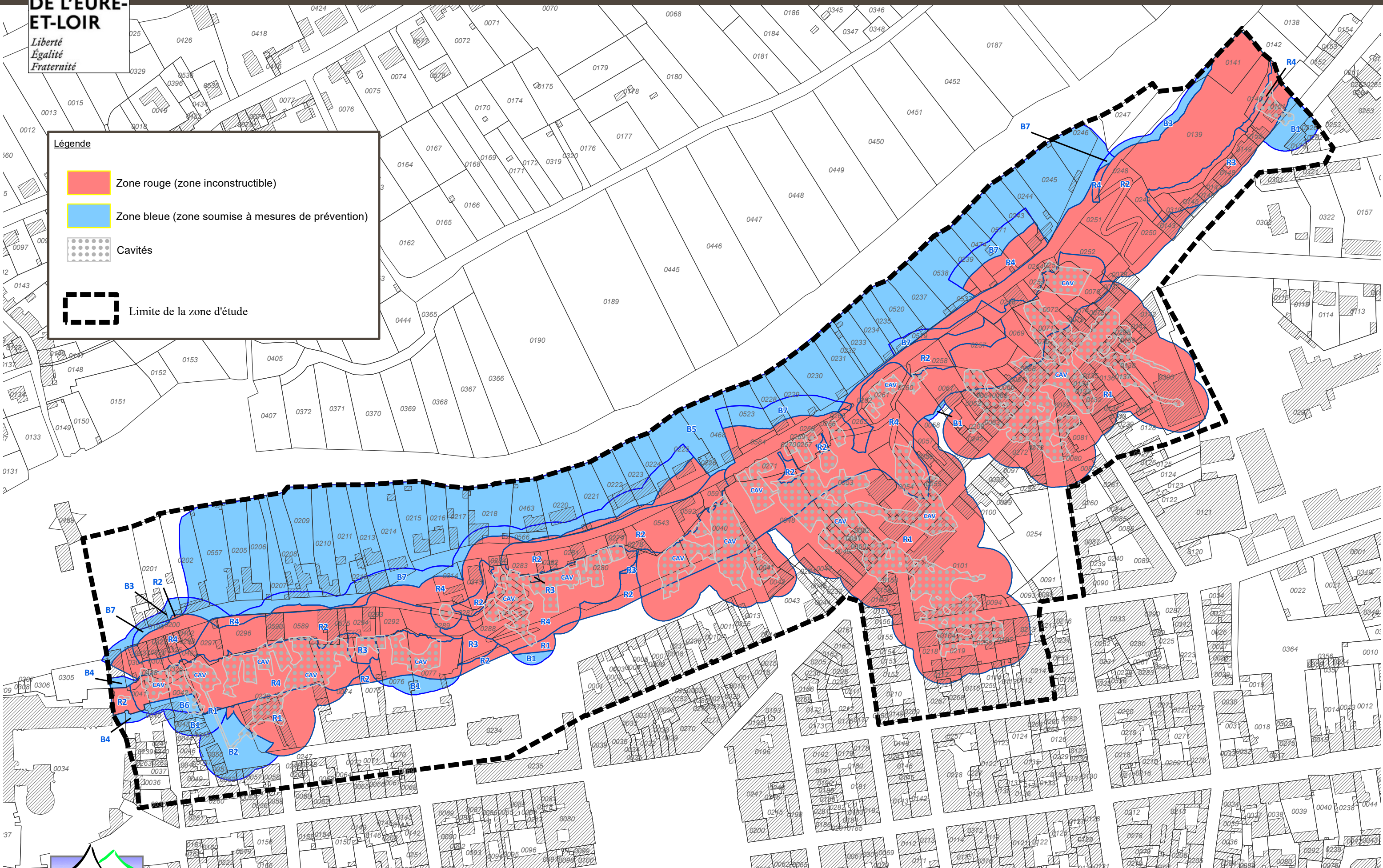
PLAN DE SITUATION DU ZONAGE RÉGLEMENTAIRE

Commune de Châteaudun



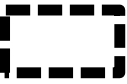


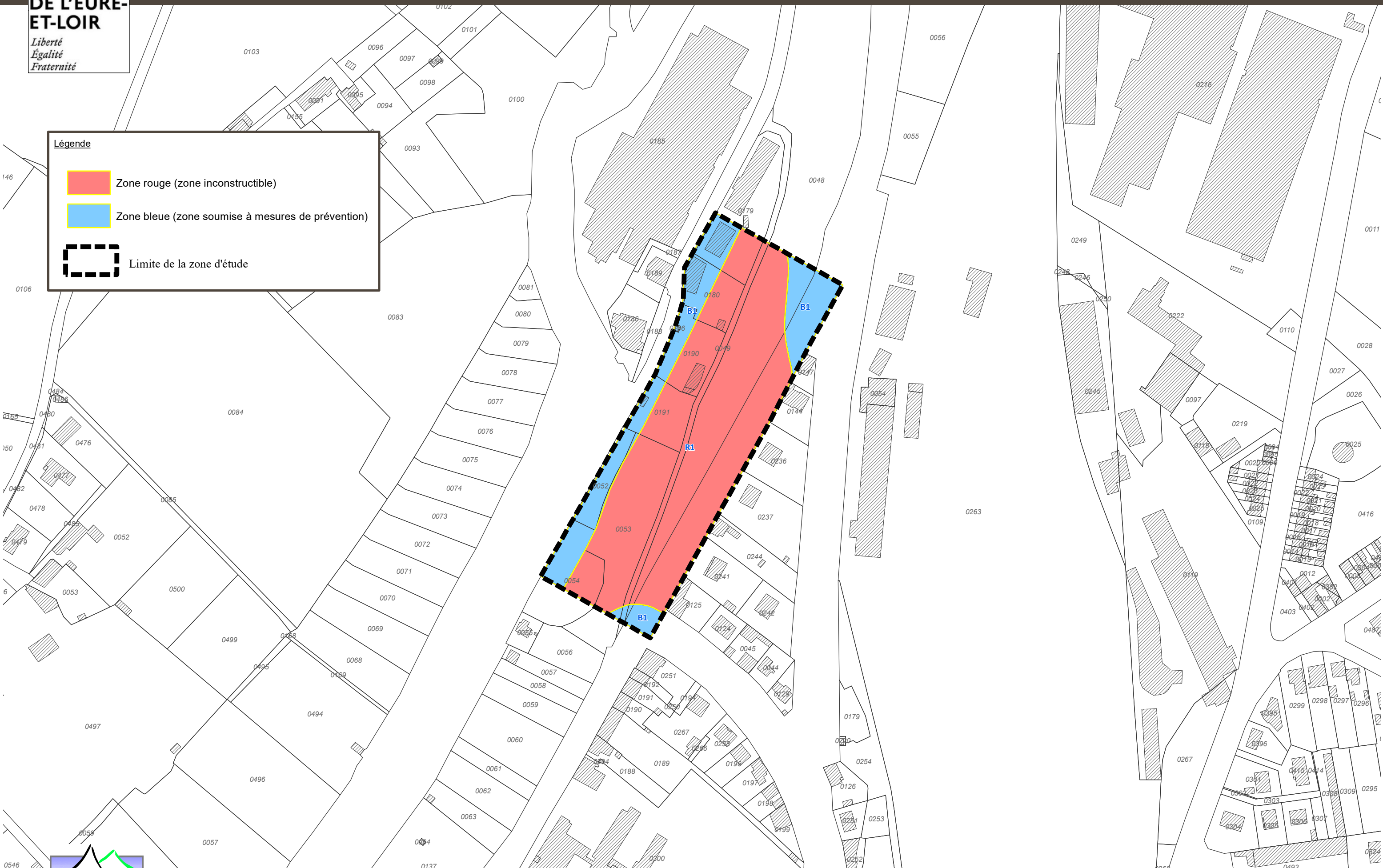
Légende

-  Zone rouge (zone inconstructible)
-  Zone bleue (zone soumise à mesures de prévention)
-  Cavités
-  Limite de la zone d'étude






Légende

-  Zone rouge (zone inconstructible)
-  Zone bleue (zone soumise à mesures de prévention)
-  Limite de la zone d'étude









Légende

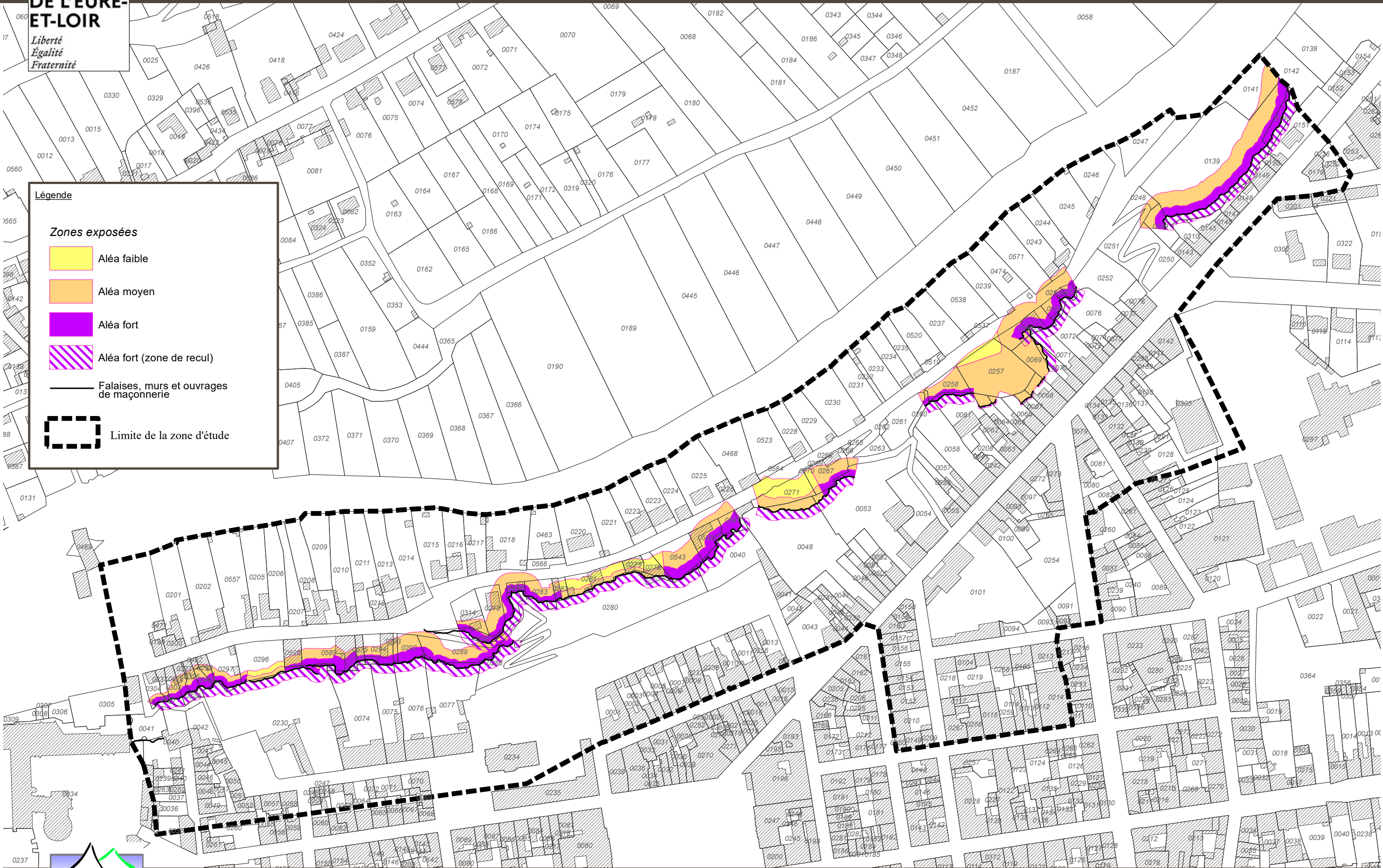
-  Zone rouge (zone inconstructible)
-  Zone bleue (zone soumise à mesures de prévention)
-  Limite de la zone d'étude



Légende







Zones exposées

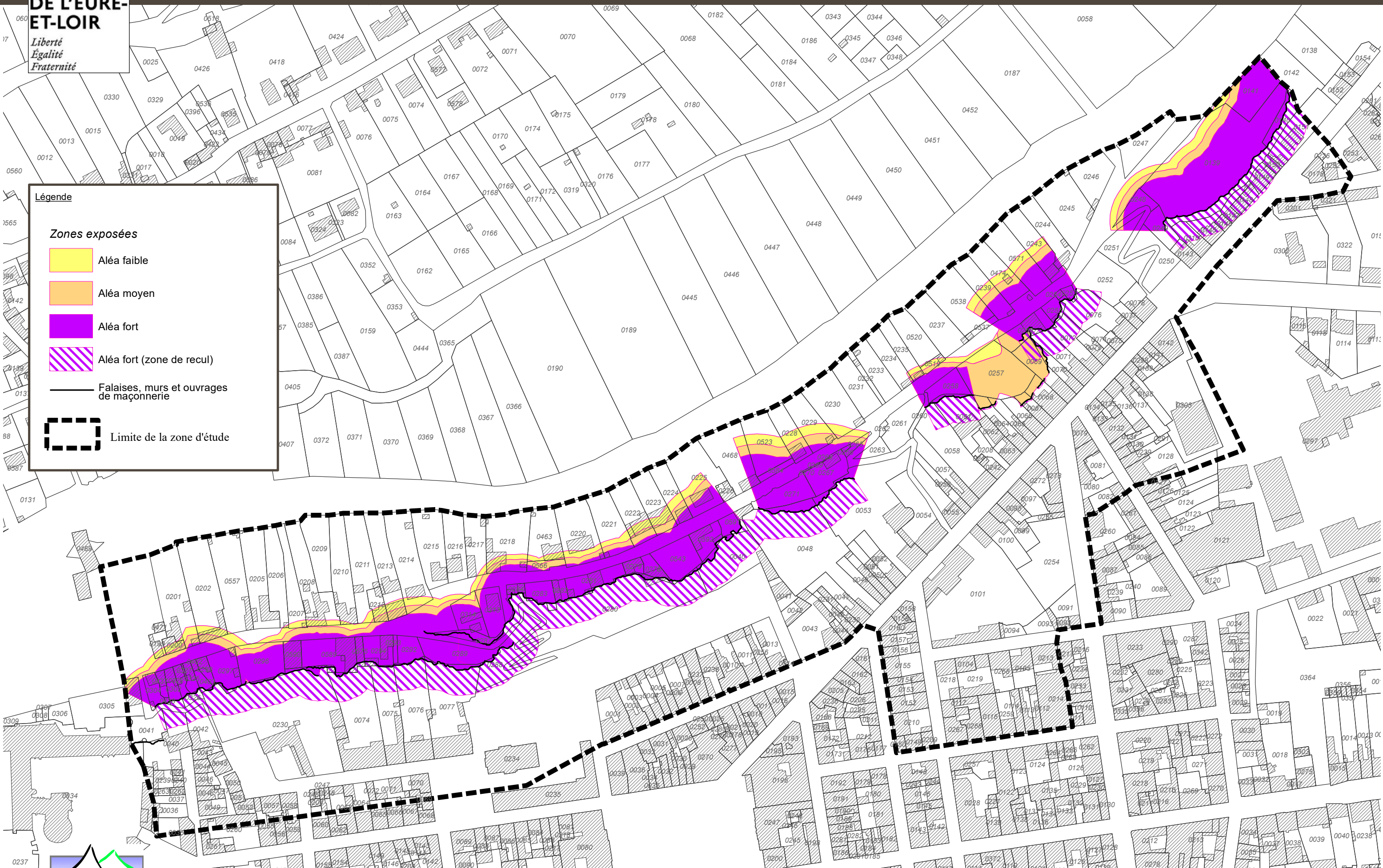
-  Aléa faible
-  Aléa moyen
-  Aléa fort
-  Aléa fort (zone de recul)
-  Falaises, murs et ouvrages de maçonnerie
-  Limite de la zone d'étude

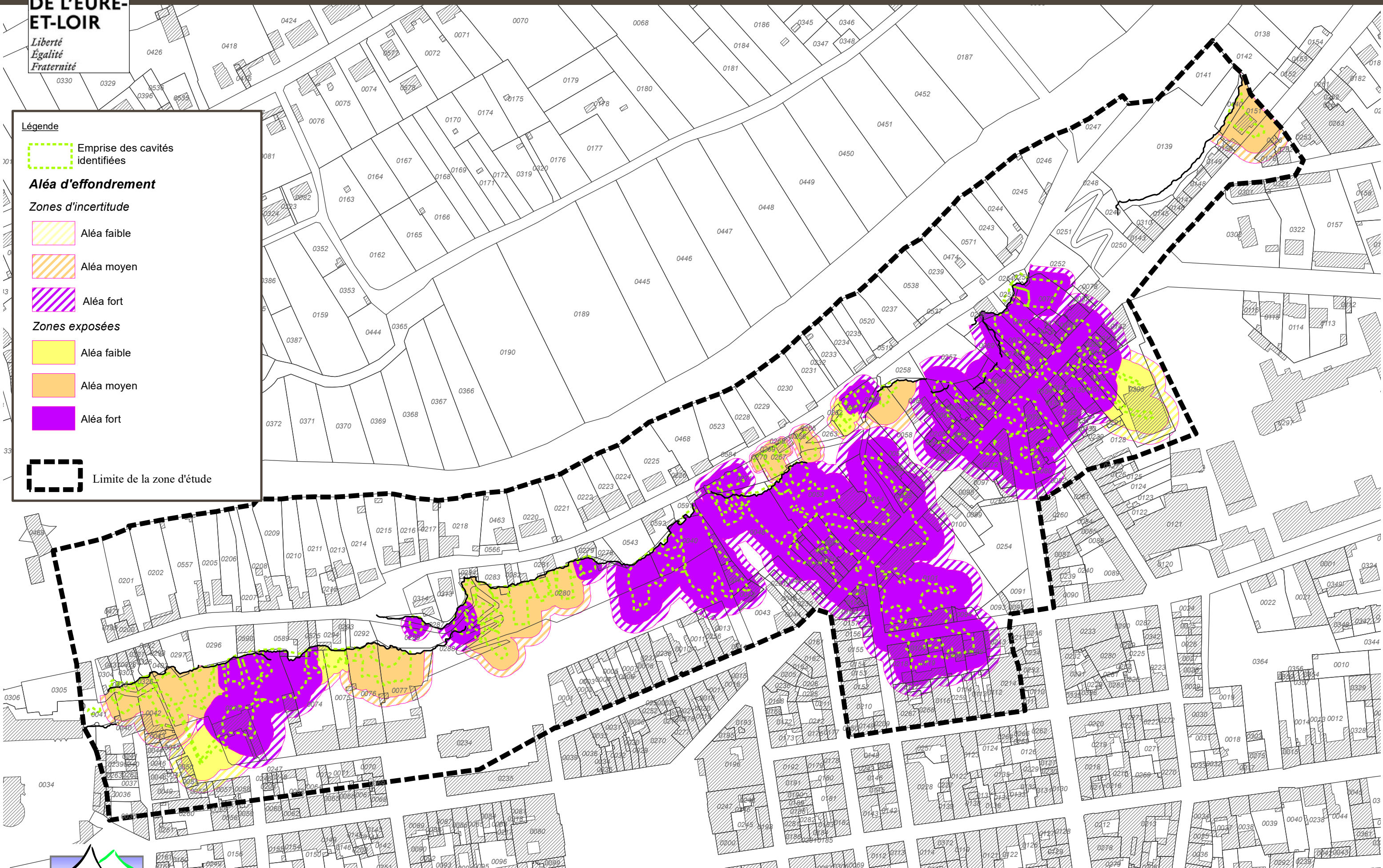


Légende

Zones exposées




-  Aléa faible
-  Aléa moyen
-  Aléa fort
-  Aléa fort (zone de recul)
-  Falaises, murs et ouvrages de maçonnerie
-  Limite de la zone d'étude




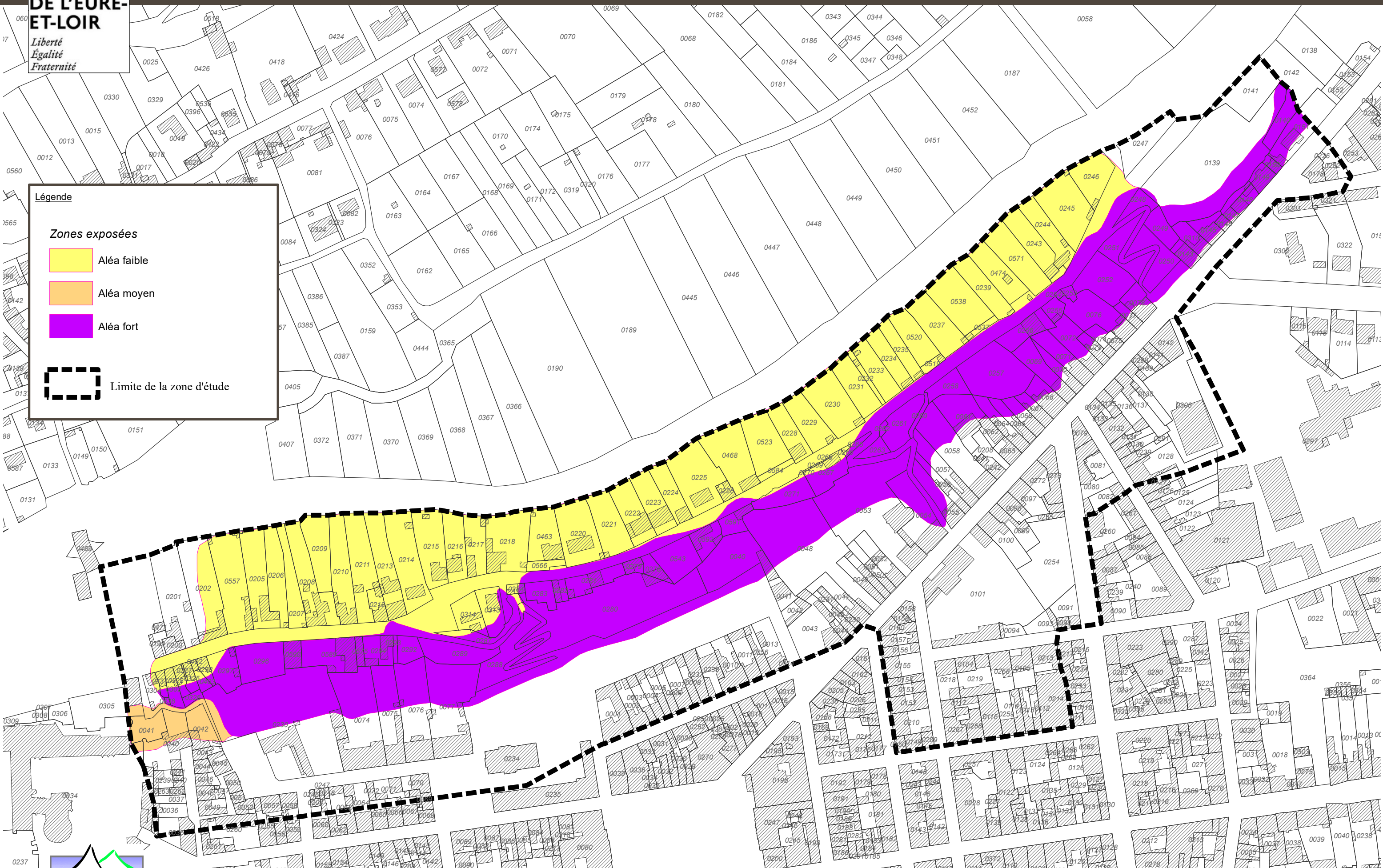


Légende







Zones exposées

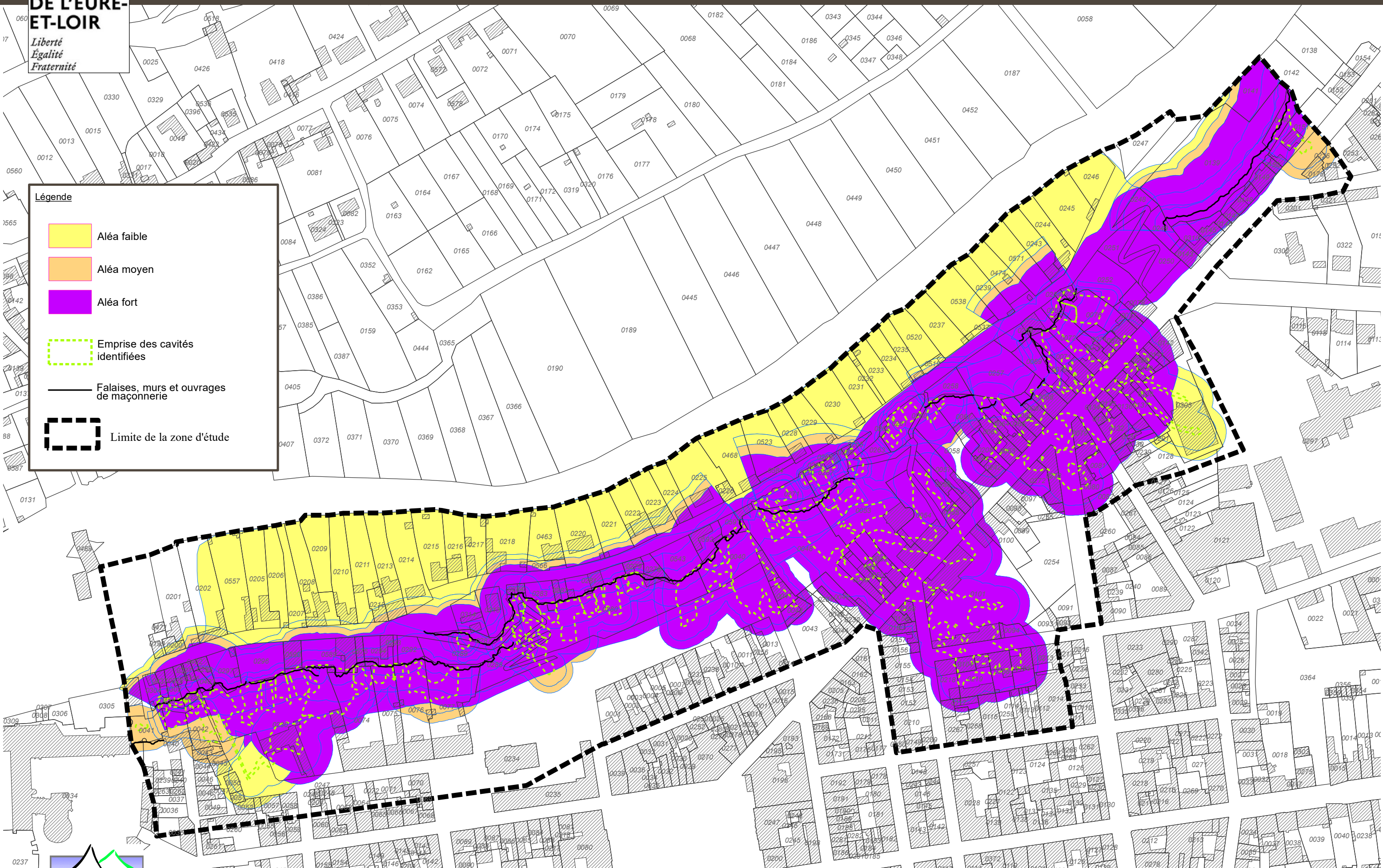
-  Aléa faible
-  Aléa moyen
-  Aléa fort

 Limite de la zone d'étude



Légende

-  Aléa faible
-  Aléa moyen
-  Aléa fort
-  Emprise des cavités identifiées
-  Falaises, murs et ouvrages de maçonnerie
-  Limite de la zone d'étude



VILLE DE CHATEAUDUN

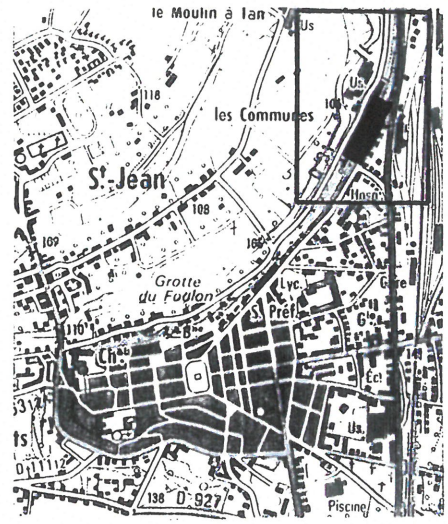
RISQUES NATURELS PREVISIBLES

MOUVEMENTS DE TERRAIN

CARTE D'ALEAS


Secteur II

Echelle : 1/2000




LEGENDE

Aléas liés à la présence de cavités souterraines (effondrement, écoulement de masses rocheuses)

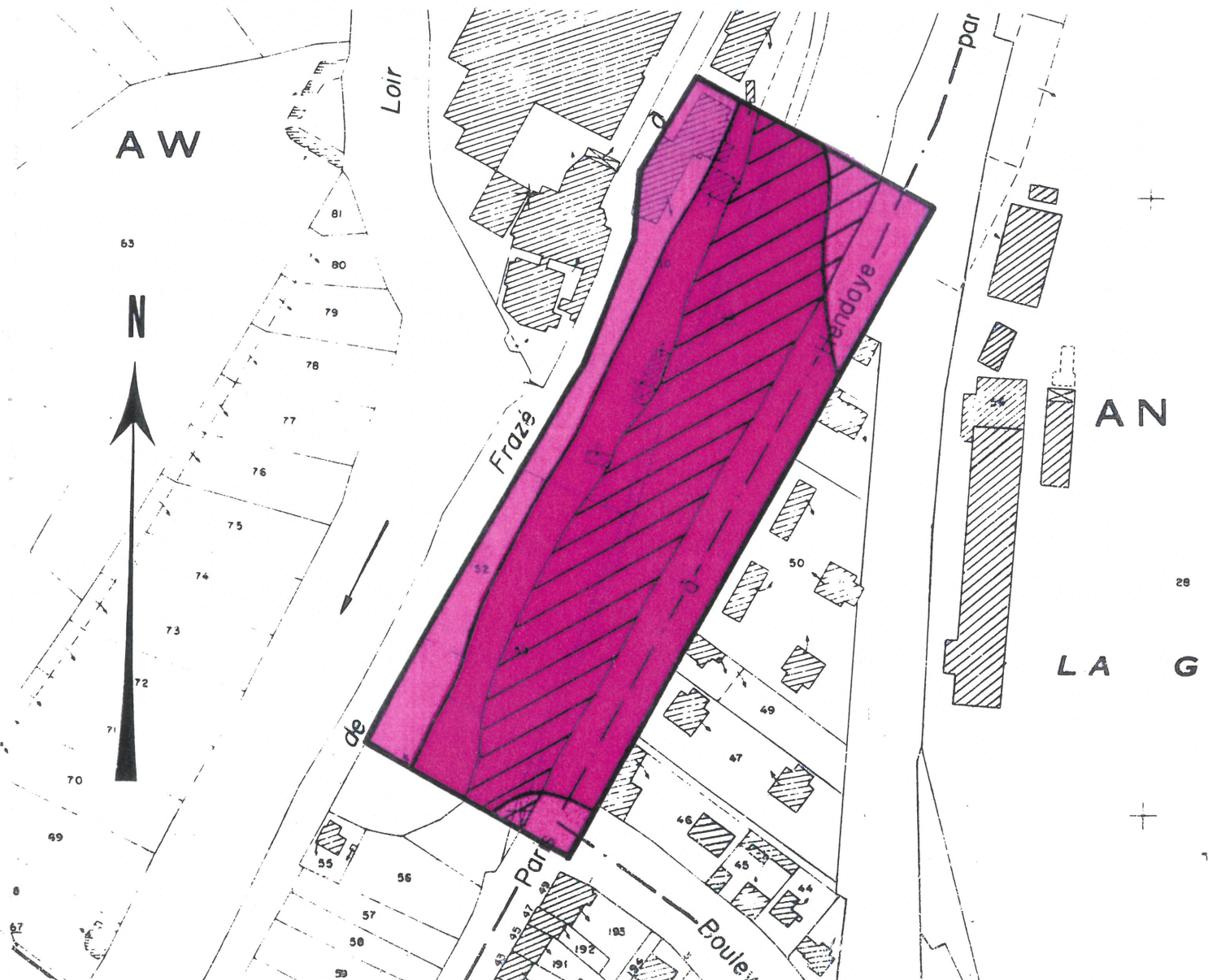
 niveau moyen (cavités non identifiées)

 niveau fort (cavités reconnues)

Aléas liés aux pentes instables

 niveau faible (glissements superficiels)

 niveau fort (coulées boueuses)



VILLE DE CHATEAUDUN

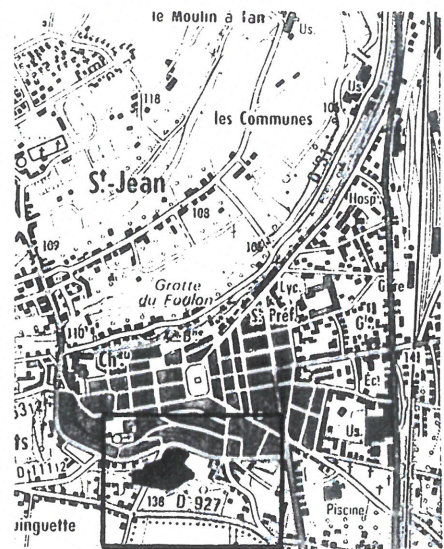
RISQUES NATURELS PREVISIBLES

MOUVEMENTS DE TERRAIN

CARTE D'ALEAS


Secteur III

Echelle : 1/2000




LEGENDE

Aléas liés à la présence de cavités souterraines
(effondrement, écoulement de masses rocheuses)

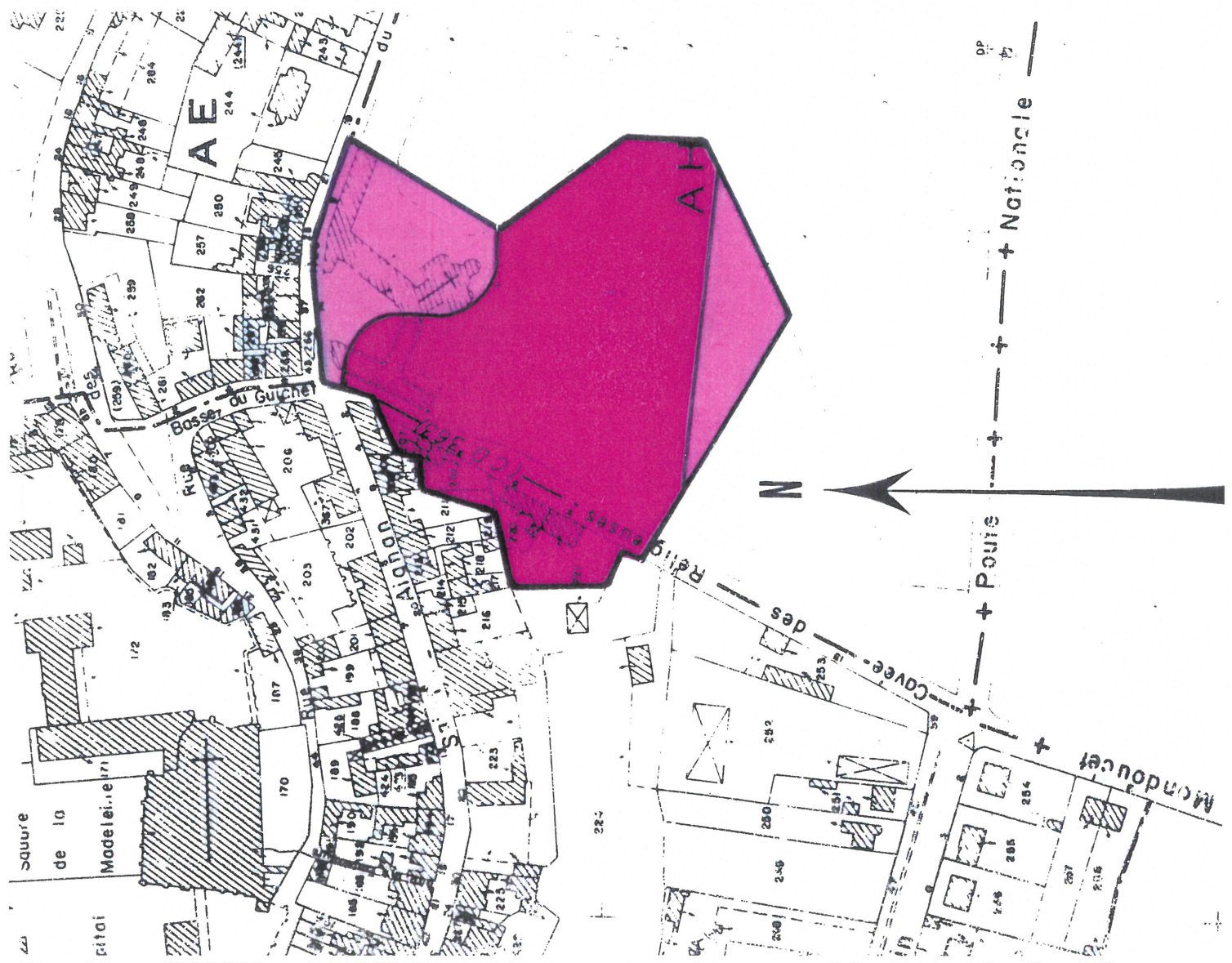
 niveau moyen
(cavités non identifiées)

 niveau fort
(cavités reconnues)

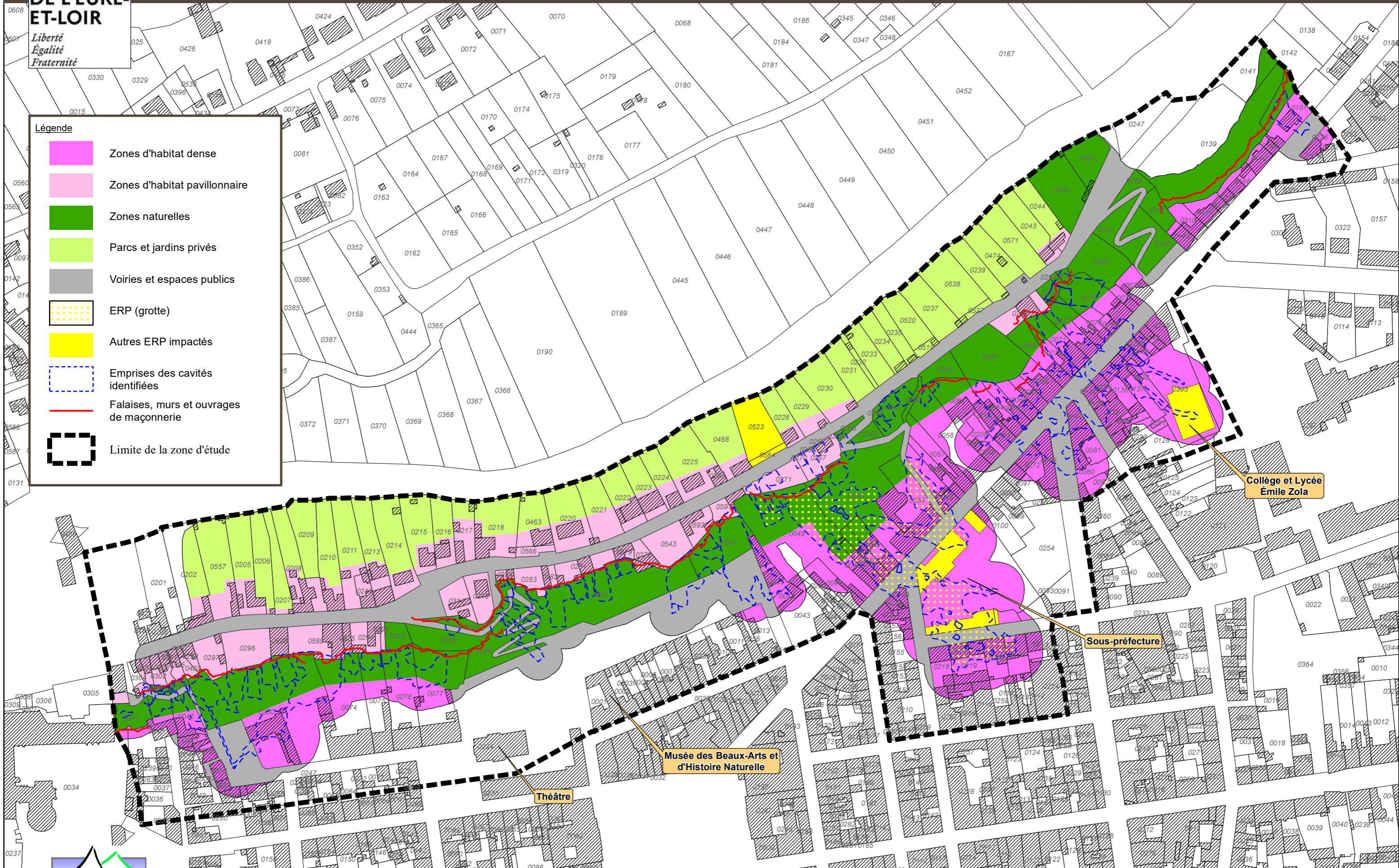
Aléas liés aux pentes instables

 niveau faible
(glissements superficiels)

 niveau fort
(couloirs boueux)



- Légende**
- Zones d'habitat dense
 - Zones d'habitat pavillonnaire
 - Zones naturelles
 - Parcs et jardins privés
 - Voiries et espaces publics
 - ERP (grotte)
 - Autres ERP impactés
 - Emprises des cavités identifiées
 - Falaises, murs et ouvrages de maçonnerie
 - Limite de la zone d'étude



VILLE DE CHATEAUDUN

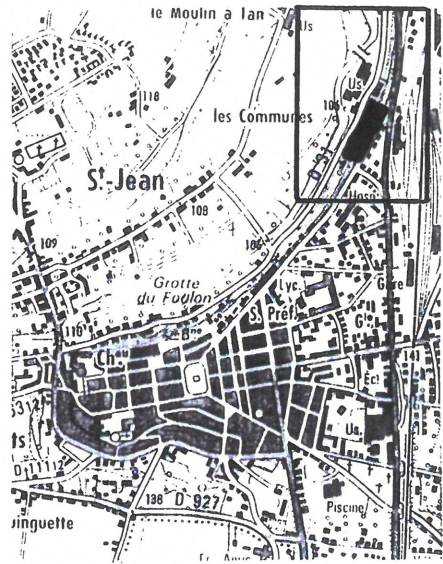
RISQUES NATURELS PREVISIBLES

MOUVEMENTS DE TERRAIN









CARTE DE LOCALISATION DES PHENOMENES

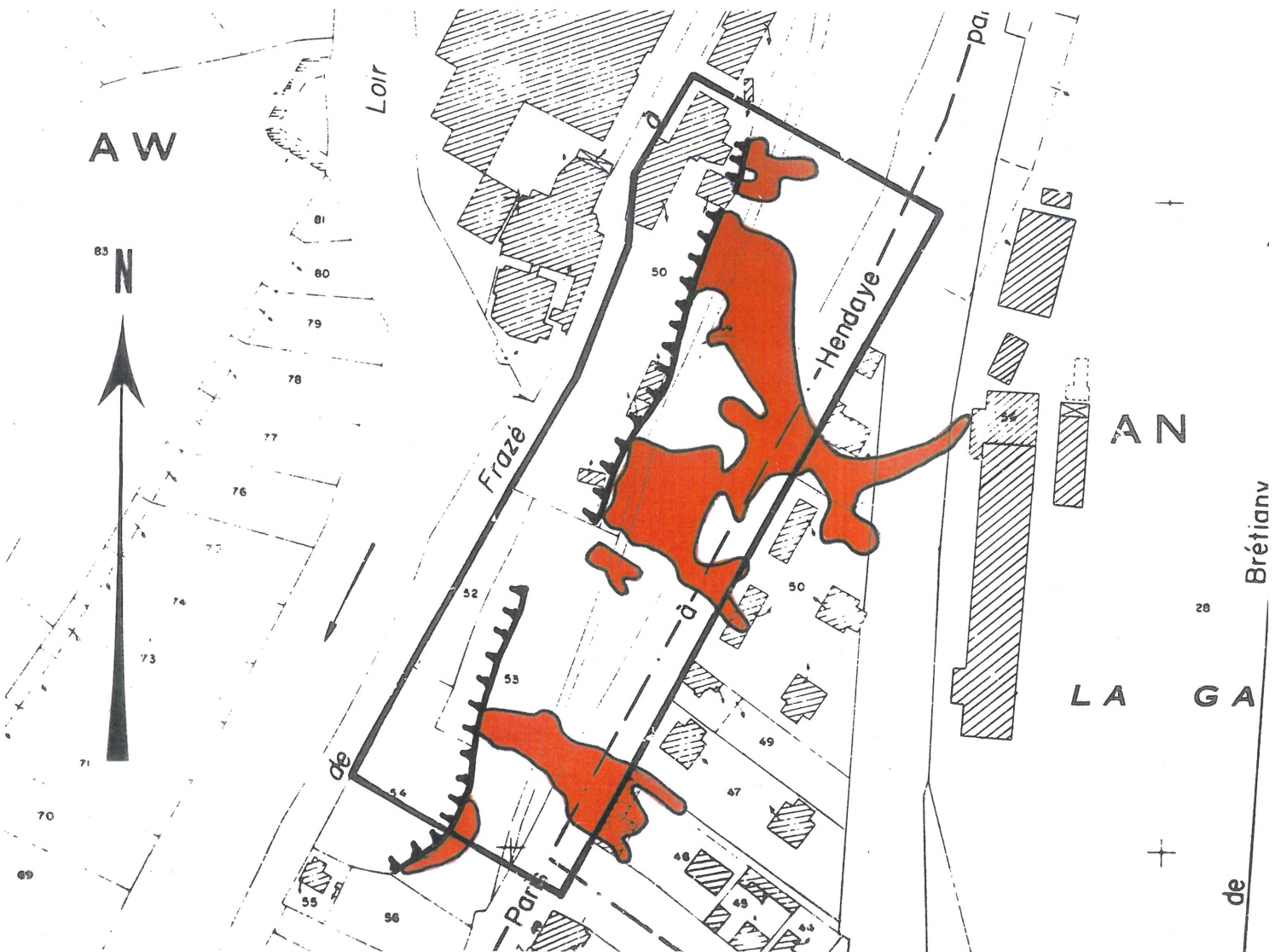
Secteur II

Echelle : 1/2000



LEGENDE

- | | | | |
|--|--|--|------------------------|
|  | Limite P.E.R. |  | Coulée boueuse |
|  | Escarpement |  | Effondrement |
|  | Carrière souterraine (ou vide karstique) |  | Eboulement en carrière |
|  | Ecoulement de masse rocheuse |  | Glissement |



VILLE DE CHATEAUDUN

RISQUES NATURELS PREVISIBLES

MOUVEMENTS DE TERRAIN







CARTE DE LOCALISATION DES PHENOMENES

Secteur III

Echelle : 1/2000



LEGENDE

- | | | | |
|--|--|--|------------------------|
|  | Limite P.E.R. |  | Coulée boueuse |
|  | Escarpement |  | Effondrement |
|  | Carrière souterraine (ou vide karstique) |  | Eboulement en carrière |
|  | Eroulement de masse rocheuse |  | Glissement |

