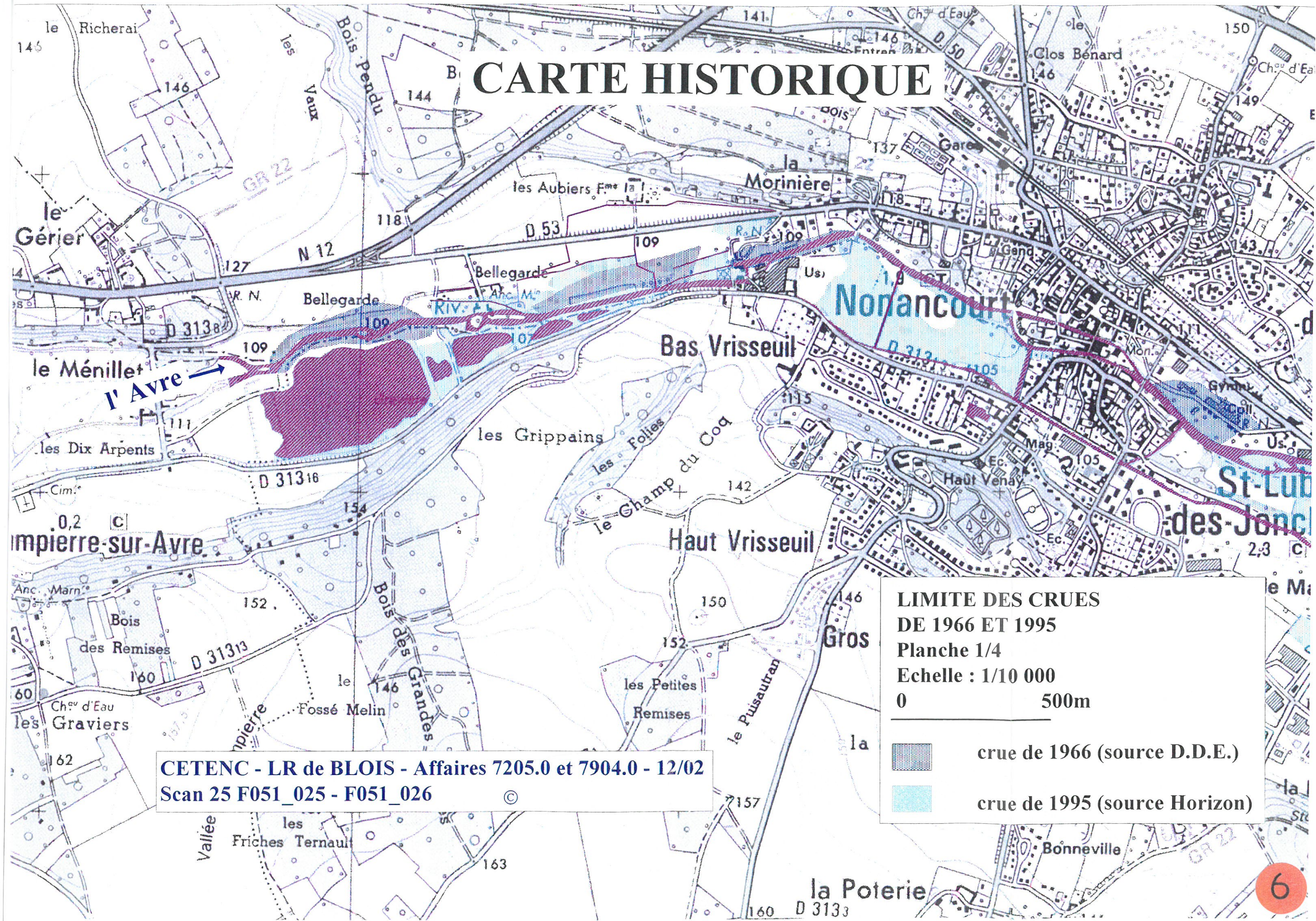




# CARTE HISTORIQUE

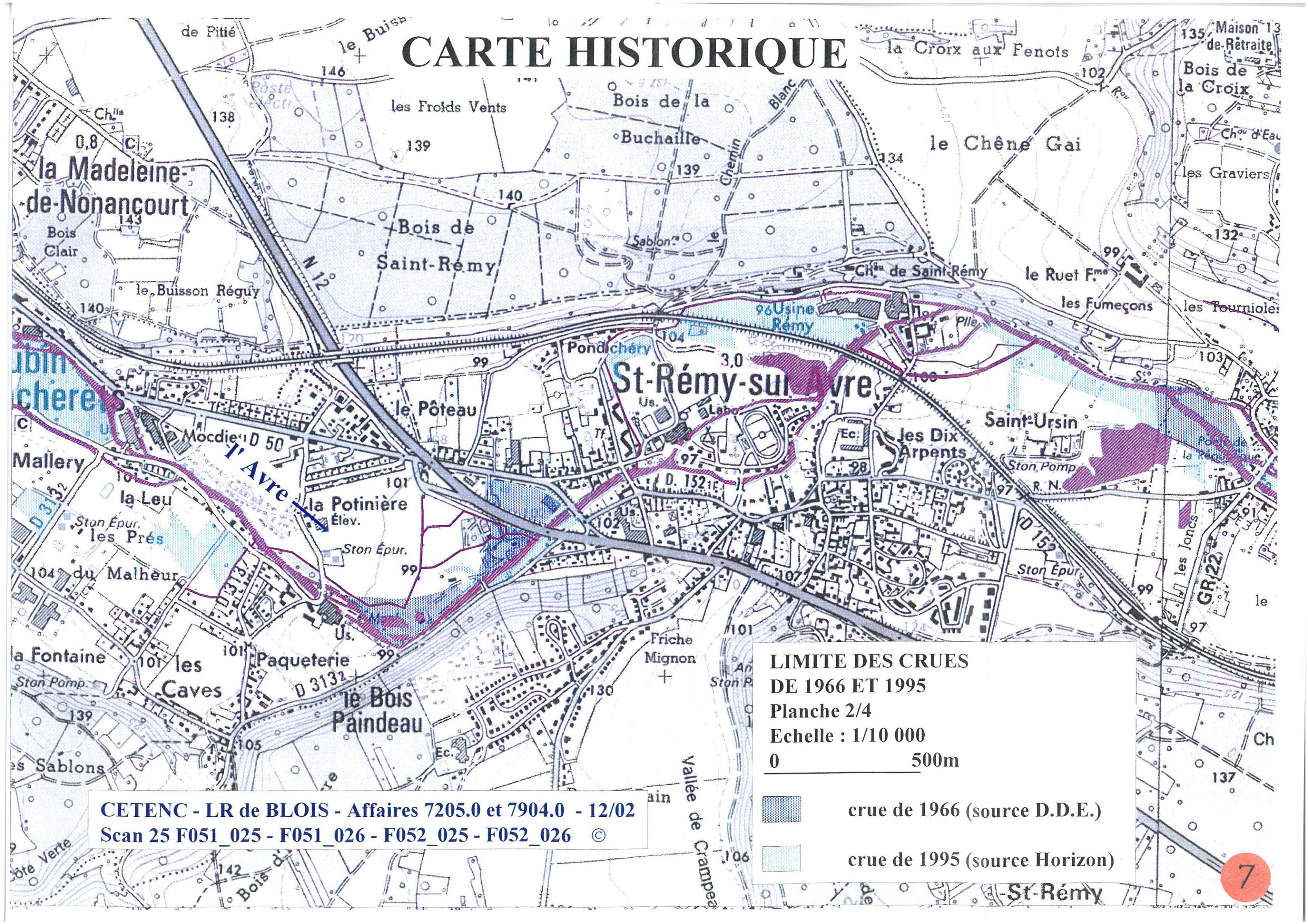


**LIMITE DES CRUES  
DE 1966 ET 1995**  
Planche 1/4  
Echelle : 1/10 000  
0 500m

 crue de 1966 (source D.D.E.)  
 crue de 1995 (source Horizon)

CETENC - LR de BLOIS - Affaires 7205.0 et 7904.0 - 12/02  
Scan 25 F051\_025 - F051\_026 ©

# CARTE HISTORIQUE



CETENC - LR de BLOIS - Affaires 7205.0 et 7904.0 - 12/02  
Scan 25 F051\_025 - F051\_026 - F052\_025 - F052\_026 ©

LIMITE DES CRUES  
DE 1966 ET 1995

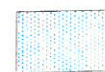
Planche 2/4

Echelle : 1/10 000

0 500m



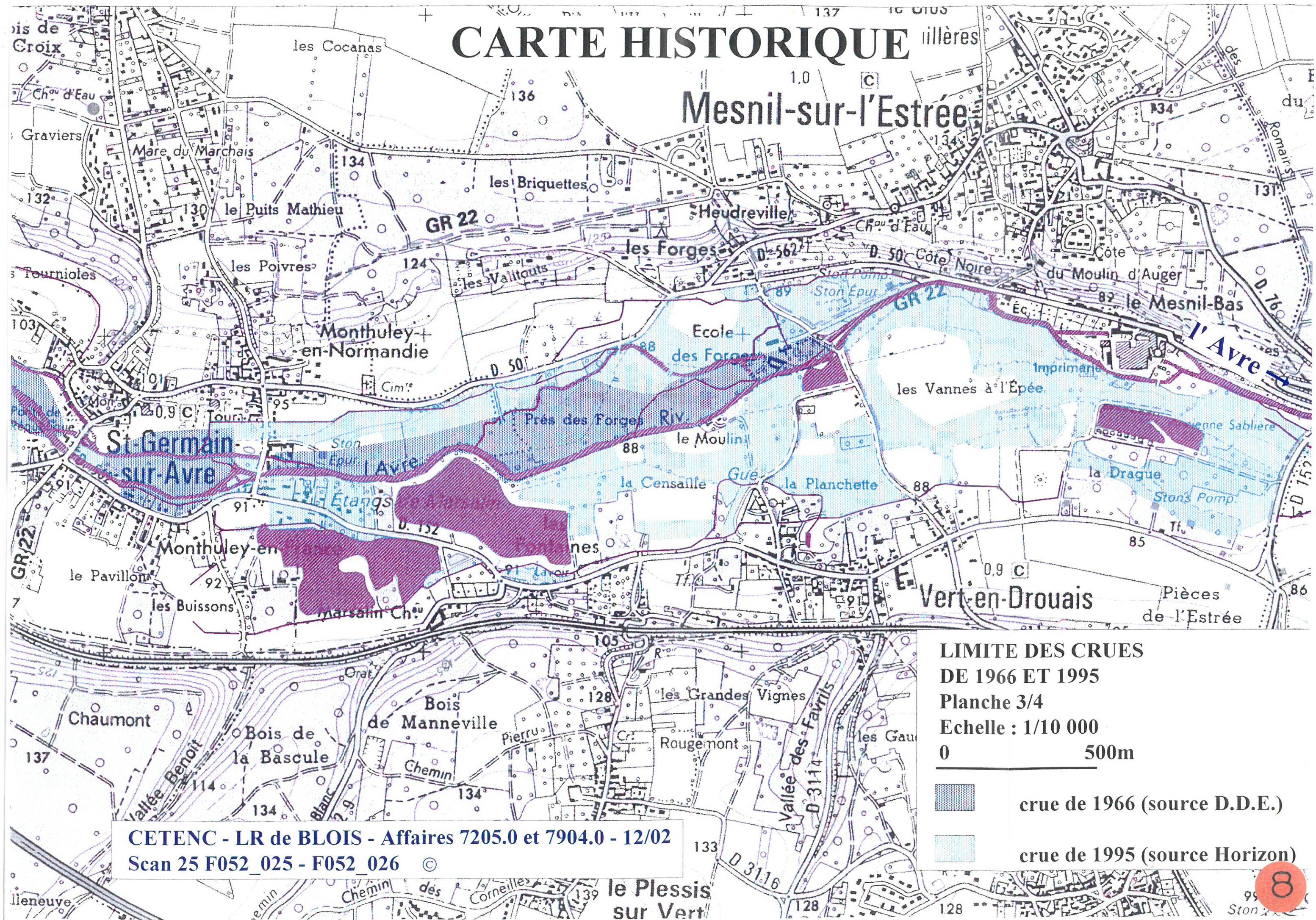
crue de 1966 (source D.D.E.)



crue de 1995 (source Horizon)

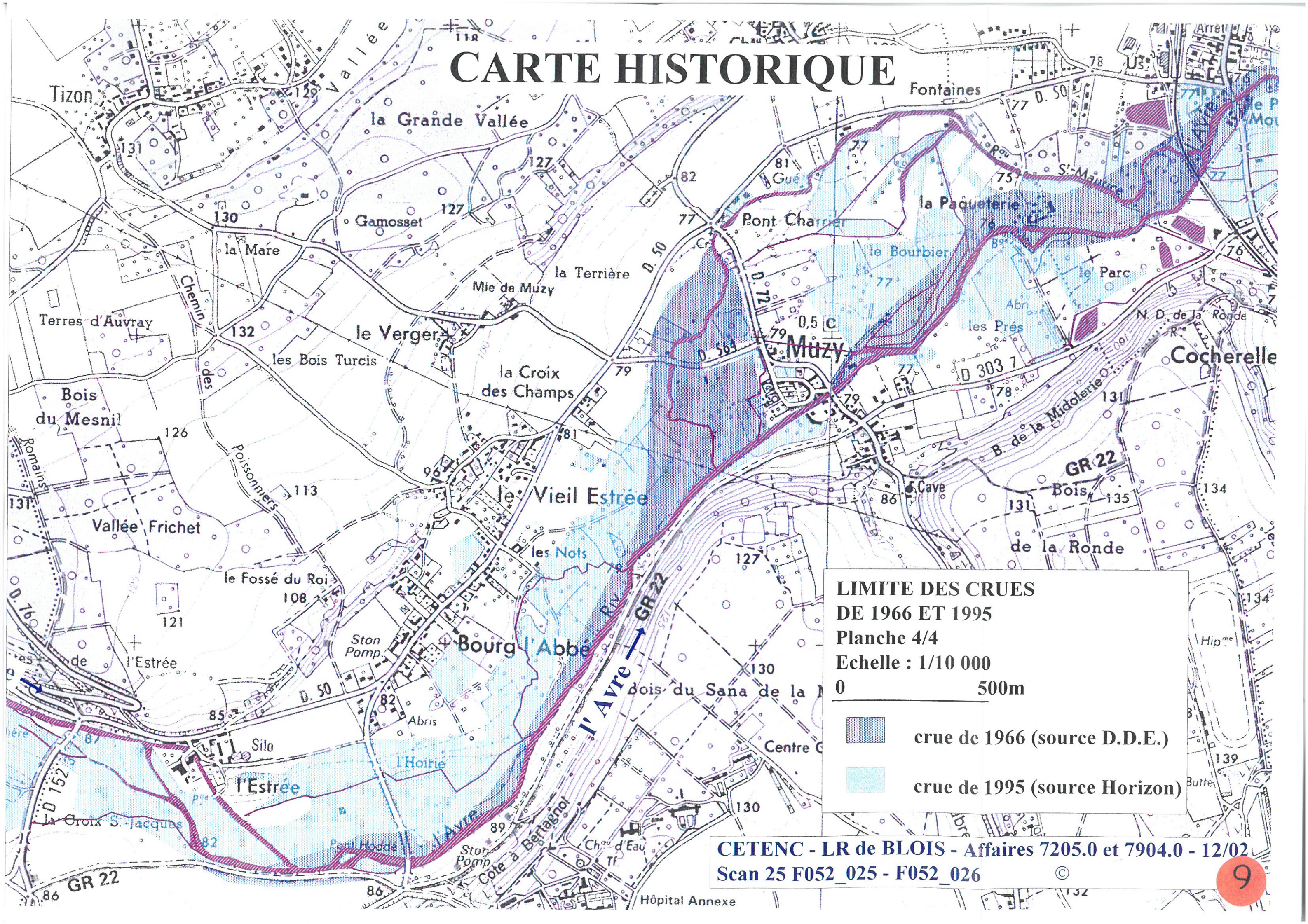
# CARTE HISTORIQUE

## Mesnil-sur-l'Éstrée



CETENC - LR de BLOIS - Affaires 7205.0 et 7904.0 - 12/02  
Scan 25 F052\_025 - F052\_026 ©

# CARTE HISTORIQUE



CETENC - LR de BLOIS - Affaires 7205.0 et 7904.0 - 12/02  
Scan 25 F052\_025 - F052\_026